

M&C

MADAM CHAIR

EMPOWERING WOMEN

VOLUME 25 · 2010
PENINSULA RM10.90
SABAH/SARAWAK RM13.90
BRUNEI S\$13.90/S\$10.90

FRIENDS
& FOES
DATUK BRIDGET LAI
IN THE BOARDROOM

BIZZY ROAD TO SUCCESS

YAP YANN FANG WORKS THAT BODY

EXCLUSIVE INTERVIEW

FROM THE PHILIPPINES WITH

FIGARO COFFEE'S FOUNDER
PACITA U. JUAN

PICTURES
WITH
SOUL
SHOTS BY
STEVE
McCURRY

LOUIS
VUITTON'S
NEW
LOOK
DATUK
MICHELLE
YEOH'S
DESIGNER
TOUCH

TUN
FATIMAH
HASHIM

IN MEMORY
OF MALAYSIA'S
FIRST
WOMAN
MINISTER

EMBARRASSING
MOMENTS
BETTER NOT LOL

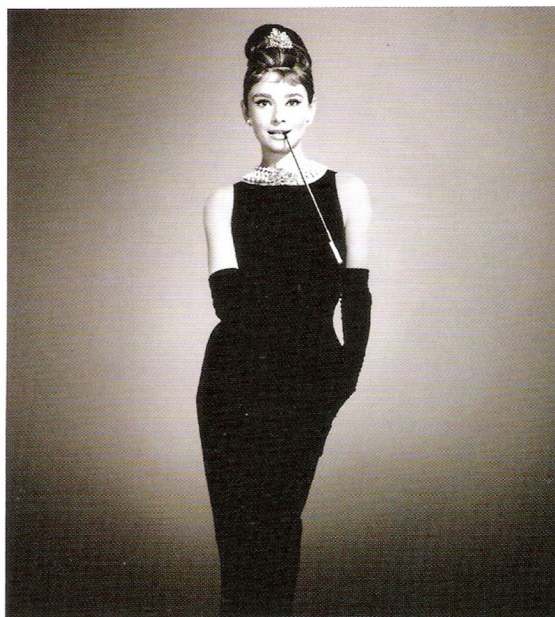
ISSN 1823-8335



9 771823 833007

PP14541/03/2010 (023426)

MICA(P)194/03/2009



AUDREY A LA MODE

It's a bit of a bore and clichéd too for a designer to say he's inspired by the eternally chic Audrey Hepburn. She's been the muse of way too many couturiers already. And, one would often think of her signature black sheath, oversized shades and pearls when it comes to Hepburn's style.

However, none of these are seen in Eric Choong's latest collection. Although he named the line "Tribute to Audrey Hepburn", Choong decides not to go the obvious way.

Instead, he pays homage to the late actress's good taste in fashion as well as charming persona. His designs come in classic shades of black and champagne with black lace, grosgrain ribbons and ostrich feathers as accents.

Choong has also given a new twist to Hepburn's famous Givenchy dress which she wore standing in front of the glass window of Tiffany & Co., New York in the movie *Breakfast at Tiffany's*.

While the original exudes refined elegance, his version is a tad whimsical. It is short and belted, with a tulip skirt and comes with a heart-neckline.

Equally classy with a touch of quirk is a long A-line dress with part of the bodice done in sheer black material for peek-a-boo effect.

Another alluring number is a halter in champagne detailed with black lace on the back, ribbons at the waist and feathers on the shoulders.

Seriously stylish would be Choong's gown that's got ideas from sportswear combined with Greek goddess glamour. Quite an odd fashion marriage but the designer's managed to make it a winning bliss.

The long strapless dress has two thick straps that meet around the neck (an idea probably taken from active wear) while the Greek goddess inspiration can be seen on the draping and ruching.

For cool nights, Choong offers a black cape in silk chiffon as a chic cover-up for his eveningwear.

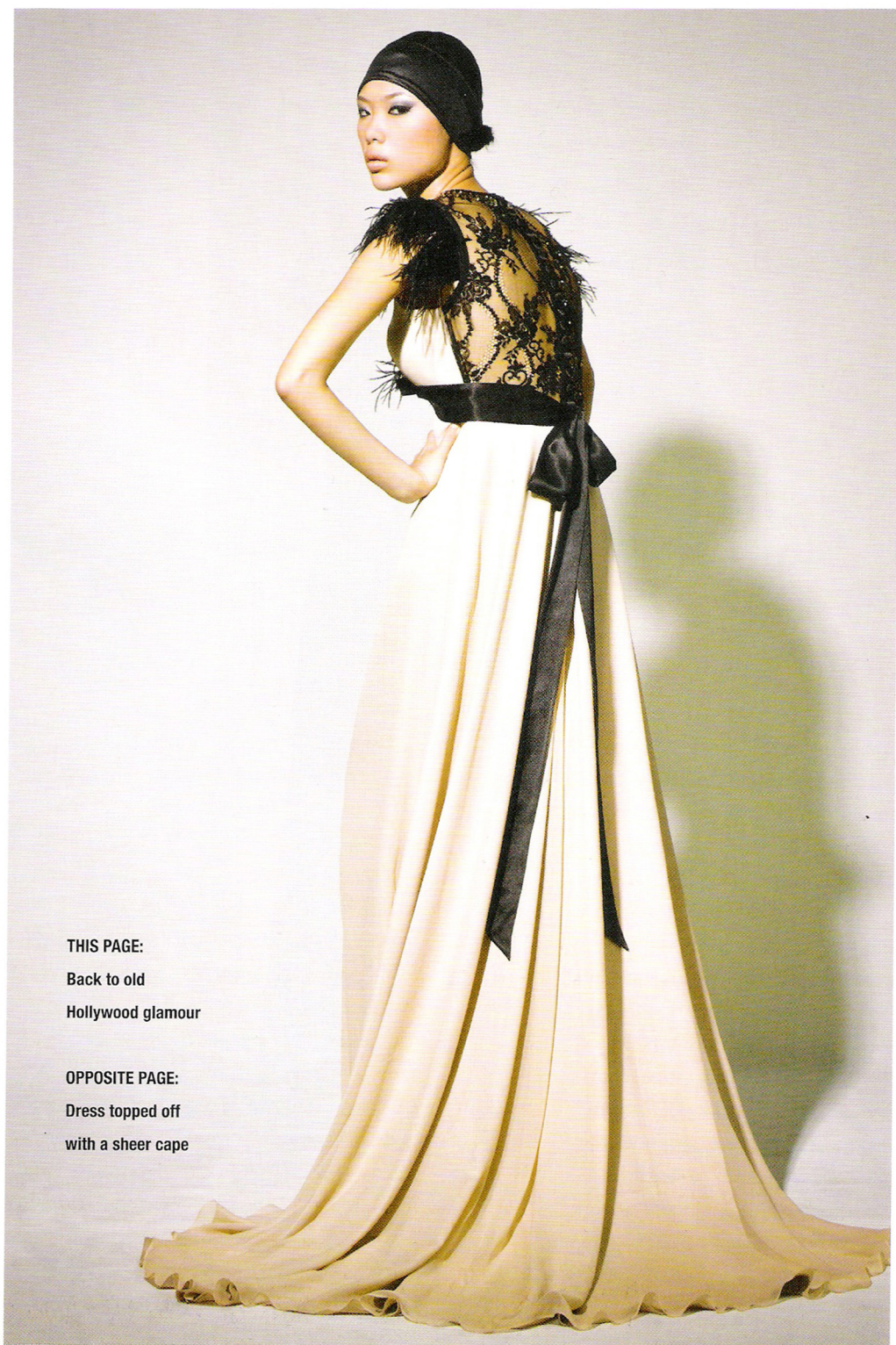
THIS PAGE:

A modern take
on Hepburn's famous
Givenchy dress from
Breakfast At Tiffany's

OPPOSITE PAGE:

Audrey Hepburn in her
famous black sheath





THIS PAGE:
Back to old
Hollywood glamour

OPPOSITE PAGE:
Dress topped off
with a sheer cape





Evening wear
worthy of any red
carpet event